

# LogIT

Laptimer  
Tachometer  
Datalogger



## LogIT Laptimer, Tachometer & Datalogger

LogIT is a professional solution for data acquisition, data display and data analysis developed especially for drivers of racing karts.

### Main Features

LogIT measures the laptimes with up to two split times and the engine rev of both 2- and 4-cycle engines.

The memory can hold data of up to 40 minutes of driving. The data can be transmitted to a PC and can be analysed with a software package including a wide range of analysis tools.

### Advantages

LogIT provides all necessary data like engine rev, split and lap times for the driver and the engineer to improve and optimize the setup of the kart and the driving style. The system is easy to install, the operation is intuitive and the relevant data is displayed concisely.

## The LogIT package

The LogIT package contains the main unit as well as sensors to pick up the engine rev and the timing signal (intended for tracks with magnetic strips). The delivery also includes a cable for the data transfer to a PC and the analysis software on a CD.

The installation, function and operation of LogIT is precisely detailed in the manual.

### Data Analysis

The logged data may be transmitted to a PC via the parallel port. The analysis software allows to display fully customizable charts and histograms of the engine rev and all times. Reports can be generated for the split and lap times. All laps may be compared to an arbitrary reference lap. The data management is facilitated by many additional informations about the track, weather and the setup of kart etc.

A very important feature is the big number of analysis tools to evaluate times, correlations and cornering.

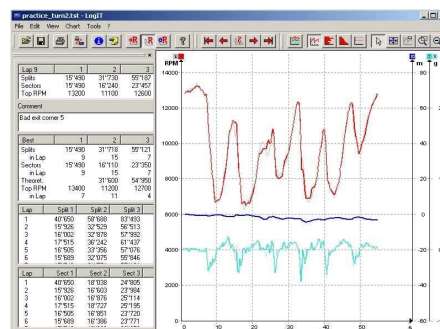
# OVS GERMANY

Oliver Weiß Systemtechnik  
Donato-Polli-Str. 52  
91056 Erlangen  
Germany

Fax.: +49(0)9131/43227

E-Mail: [contact@logit-online.de](mailto:contact@logit-online.de)

Internet: [www.logit-online.de](http://www.logit-online.de)



Screenshot of the analysis software.



The LogIT package.